



EN



ARJES

Recycling Innovation



TITAN

THE HEAVY-DUTY CLASS

www.arjes.de

OUR SHREDDERS OF THE ARJES HEAVY-DUTY CLASS

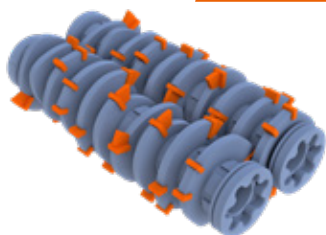


When choosing the right machine, our customers are usually faced with the question of which shredder is right for their specific requirements. Therefore, we have divided our unique two-shaft shredders into three product lines to help you make the right decision.

Fields of application TITAN class

-  Commercial waste
-  Rubber and old tires
-  Automotive and light scrap
-  CFRP/GFRP waste
-  Natural and waste wood
-  Paper and cardboard

METAL SHAFTS



PADDLE SHAFTS





PRODUCT LINE **TITAN**

The heavy-duty class is all about the heaviest chunks and the most demanding applications. Where many throw in the towel, we take on the challenge and seek to satisfy with a competitively superior range of applications. Especially companies that have to process a huge amount of waste products on a daily basis find themselves at home within this price range. Our mobile shredders are available in two versions and include, as standard series, a crawler track system. The TITAN shredders are equipped with a revolutionary quick change shaft system, an innovative SCU control as well as specifically designed shafts that meet the most challenging requirements.

Alternatively, the ARJES heavy-duty class also offers the possibility of using a stationary electric or diesel version, in which the two-shaft shredders convince with maximum efficiency. The system is divided into a drive and control unit and can be integrated into existing recycling plants or used as a stand-alone machine.

There are countless applications for the treatment of domestic and commercial waste as well as the shredding of rubber and old tires, car scrap, light scrap, CFRP and GFRP waste, natural wood, old waste, paper, and cardboards.



THROUGHPUT RATES*	
Commercial waste	Ø 25 – 50 t/h
Rubber and old tires	Ø 13 – 25 t/h
Light scrap	Ø 15 – 30 t/h
CFRP/GFRP waste	Ø 15 – 30 t/h
Waste wood	Ø 50 – 100 t/h
Wooden railway sleepers	Ø 25 – 50 t/h
Car bodies (only 950)	Ø 12 – 25 t/h
White goods (only 950)	Ø 20 – 40 t/h
Engine blocks (only 950)	Ø 15 – 30 t/h

*Depends on the equipment of the shredder, the shaft configuration, the position of the side combs and the optimum material feed. The performance data given are average values without guarantee!

TITAN 900 MOBILE HEAVY-DUTY CLASS



REVERSIBLE FAN

Included! Self cleaning CLEANFIX fan for ideal air circulation and dirt reduction in the engine compartment



SHREDDING UNIT

Large-volume hopper and two shaft system with **quick change cassette**



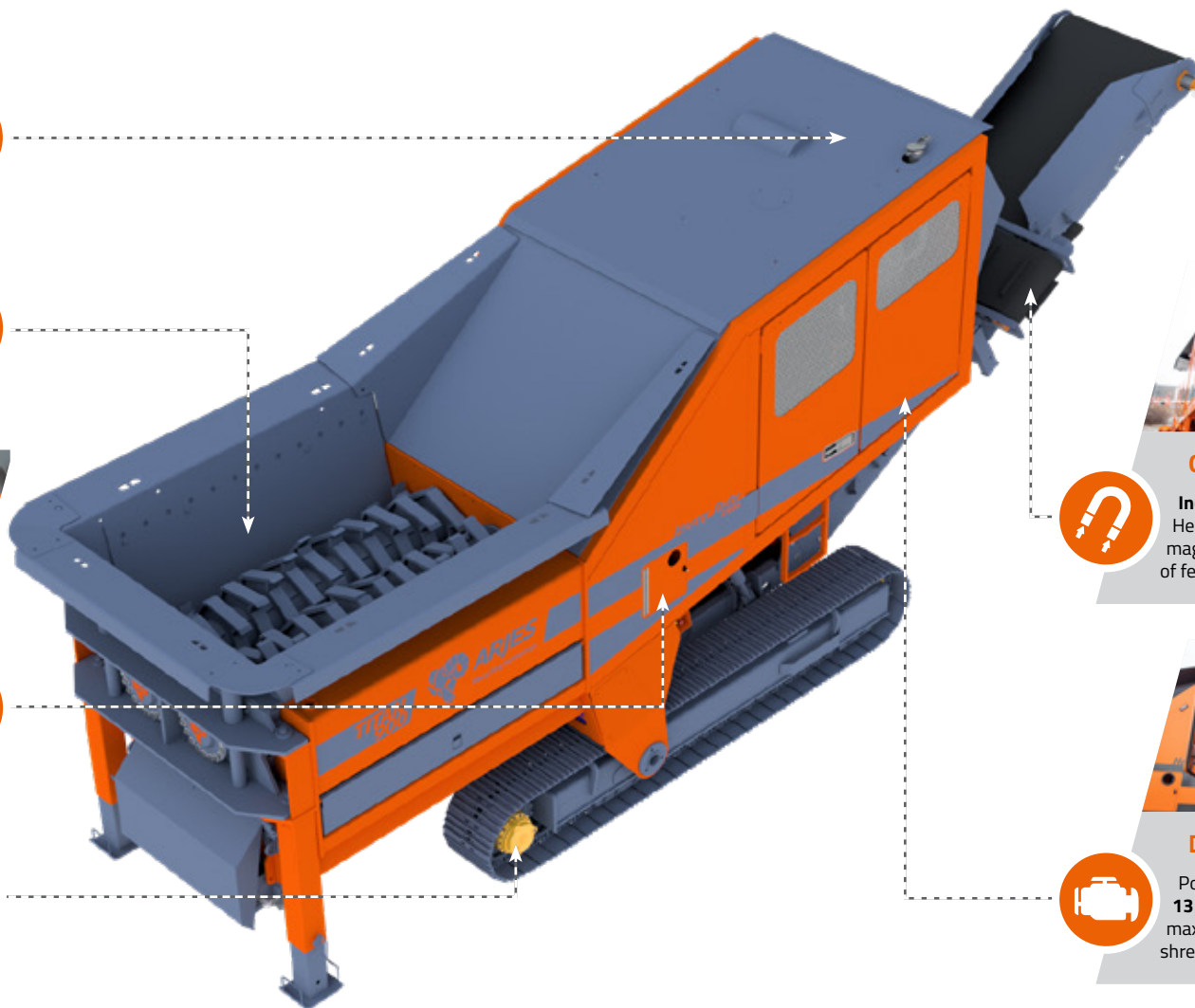
SCU CONTROL SYSTEM

Including **remote control** and predefined shredding programs that adjust rotation and speed of shafts



CRAWLER CHASSIS

Included! Guaranteed high mobility on uneven surfaces



OVERBELT MAGNET

Included! Height-adjustable permanent magnet for effective separation of ferrous metals



DRIVE

Powerful **VOLVO PENTA 13 litre diesel engine** for maximum efficiency during the shredding process



TECHNICAL DATA

DIMENSIONS

Version	Crawler track system
Length (mm)	11,000 / 11,000 (transport)
Width (mm)	3,000 / 3,000 (transport)
Height (mm)	4,200 / 3,700 (transport)
Total weight (kg)	35,000

DRIVE

	EU / US	ROW**
Engine (Volvo Penta)	TAD 1385 VE	TAD 1650VE-B
Emission standard	EU Stage V / EPA Tier IV	Stage III A
Power (kW / HP)	405 / 550	
Fuel capacity (l)	800	
Gearbox	Bonfiglioli	

DISCHARGE BELT

Discharge height (mm)	3,500
Width (mm)	1,200
Included	Height adjustable overbelt magnet

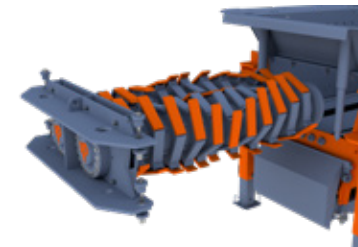
SHREDDING UNIT

Hopper volume (m ³)	5
Shaft length (mm)	2,500
Shaft diameter (mm)	860
Weight (kg / cassette)	7,650
Rotation speed (rpm)	45



Easy maneuvering and transportability

The standard crawler track system stands for optimal mobility at the application site of the shredder and guarantees a quick and trouble-free loading onto a low-loader.



Quick change system for tool shafts

The easy and time-saving installation and dismantling of the pair of shafts guarantees a smooth operation and minimizes maintenance and repair efforts at the shredding shafts.



Hydraulically adjustable side combs

To determine the final output grain size, the combs can be closed or opened. In this way, the throughput of the shredder is adjusted to the material and the customer's requirements.

*Recommended retail price FCA plus applicable VAT and additional costs (transport, insurance, customs, etc.); ** Rest of the world (country-specific requirements)

TITAN 900 e-pu/d-pu STATIONARY HEAVY-DUTY CLASS



SHREDDING UNIT

Large-volume hopper and two shaft system with **quick-change cassette** (optional hopper elevation)



DISCHARGE BELT

Optional! 1,200 mm wide discharge belt for efficient material discharge according to customer requirements

OVERBELT MAGNET

Optional! Height-adjustable permanent magnet for effective separation of ferrous metals



STATIONARY

Use as stand-alone machine or optional integration into recycling plants according to customer requirements



CONTROL SYSTEM

Operation via **remote control** and optional integration into complete systems possible according to customer requirements



DRIVE (e-pu / d-pu)

Two powerful **electric motors** or one **diesel engine** for off-grid operations



TECHNICAL DATA

DIMENSIONS

Version	Stationary	
Shredding Unit		
Length (mm)	4,700 / optional belt length	
Width (mm)	3,000	
Height (mm)	3,100 / 4,300 (incl. hopper extension)	
Control Unit		
Length (mm)	3,500	
Width (mm)	2,300	
Height (mm)	2,700	
Total weight (kg)	19,000 (shredding unit without belt) 7,000 (power unit)	

DRIVE

Engine	Electric	Diesel*
Power (kW)	2 x 250	405
Gearbox	Bonfiglioli	

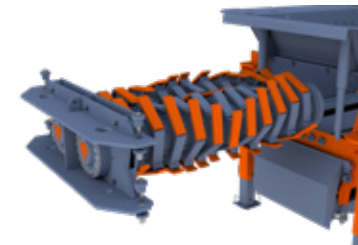
SHREDDING UNIT

Hopper volume (m ³)	5	
Shaft length (mm)	2,500	
Shaft diameter (mm)	860	
Weight (kg / cassette)	7,650	
Rotation speed (rpm)	15 – 45	45



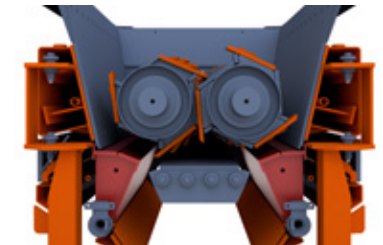
Separate drive and control unit

By the separation of shredding unit and power unit with a distance of 6 meters maximum, vibrations are reduced significantly. Furthermore, less dust and dirt get into the control system.



Quick change system for tool shafts

The innovative quick change cassette enables maintenance, processing and change of the shaft type within no time, so an almost interruption-free operation is ensured.



Hydraulically adjustable side combs

The adjustment of the output grain size is made by the opening or closing of the side combs. This adaptability makes it possible to determine the throughput of the shredder according to material and customer requirements.

*Engine type and emission standard according to mobile version

TITAN 950 MOBILE HEAVY-DUTY CLASS



REVERSIBLE FAN

Included! Self cleaning CLEANFIX fan for ideal air circulation and dirt reduction in the engine compartment



SHREDDING UNIT

Large-volume hopper and two shaft system with quick change cassette



SCU CONTROL SYSTEM

Including remote control and predefined shredding programs that adjust rotation and speed of shafts



CRAWLER CHASSIS

Included! Guaranteed high mobility on uneven surfaces



OVERBELT MAGNET

Included! Lengthwise, built-in rigid permanent magnet for effective Fe separation



CROSS BELT

Included! For lateral discharge of the separated non-ferrous fraction



DRIVE

Powerful **VOLVO PENTA** diesel engine for the maximum efficiency during the shredding process.

POWERED BY
VOLVO PENTA

TECHNICAL DATA

DIMENSIONS

Version	Crawler track system
Length (mm)	13,000 / 13,000 (transport)
Width (mm)	5,700 / 3,000 (transport)
Height (mm)	4,300 / 3,700 (transport)
Total weight (kg)	38,500

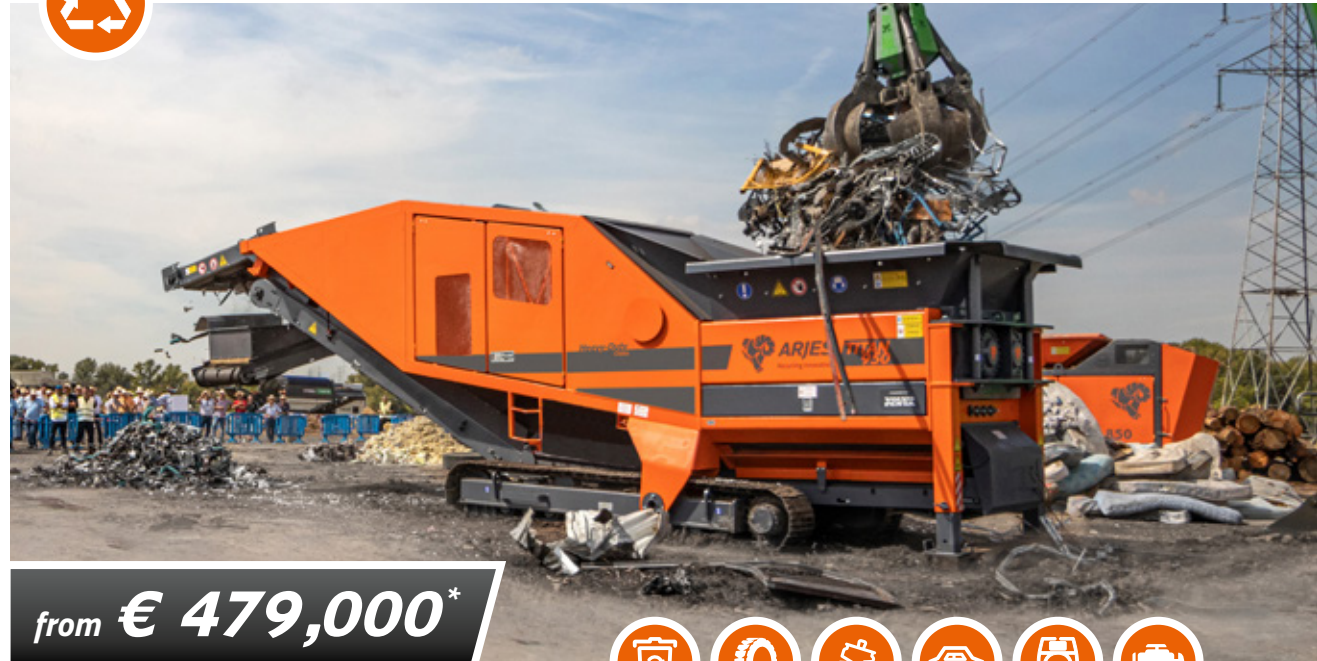
DRIVE	EU / US	ROW**
Engine (Volvo Penta)	TAD 1385 VE	TAD 1650VE-B
Emission standard	EU Stage V / EPA Tier IV	EU Stage III A
Power (kW / HP)	405 / 550	
Fuel capacity (l)	800	
Gearbox	Bonfiglioli	

DISCHARGE BELT

Discharge height (mm)	3,500
Width (mm)	1,000 (non-ferrous fraction/cross belt) 1,400 (ferrous fraction/discharge belt)
Included	Cross belt and lengthwise magnet

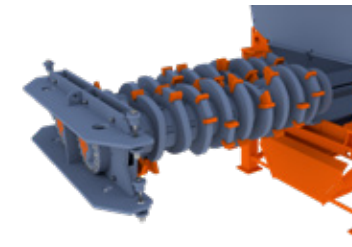
SHREDDING UNIT

Hopper volume (m ³)	5
Shaft length (mm)	2,500
Shaft diameter (mm)	860
Weight (kg / cassette)	7,650
Rotation speed (rpm)	45



Easy maneuvering and transportability

The crawler track system contained in the scope of supply guarantees ideal mobility on site and enables easy loading on a low-loader.



Quick change system for tool shafts

Thanks to our quick change cassette, different types of shafts can be changed and maintenance work can be carried out easily to continue operation as quickly as possible.



Automatic pressure controlled damping system

In case of too much resistance, the side combs retract inwards and outwards hydraulically. This prevents damage to the shredding unit and regulates the size of the shredded material.

*Recommended retail price FCA plus applicable VAT and additional costs (transport, insurance, customs, etc.); ** Rest of the world (country-specific requirements)

TITAN 950 e-pu/d-pu STATIONARY HEAVY-DUTY CLASS



SHREDDING UNIT

Specially reinforced volume hopper and two-shaft system with quick change cassette (optional hopper elevation)



DISCHARGE BELT

Optional! Conveyor belt for efficient material discharge according to customer requirements



OVERBELT MAGNET

Optional! Height-adjustable permanent magnet for effective Fe separation



STATIONARY

Used as an individual machine or optional integration in recycling plants according to customer requirements



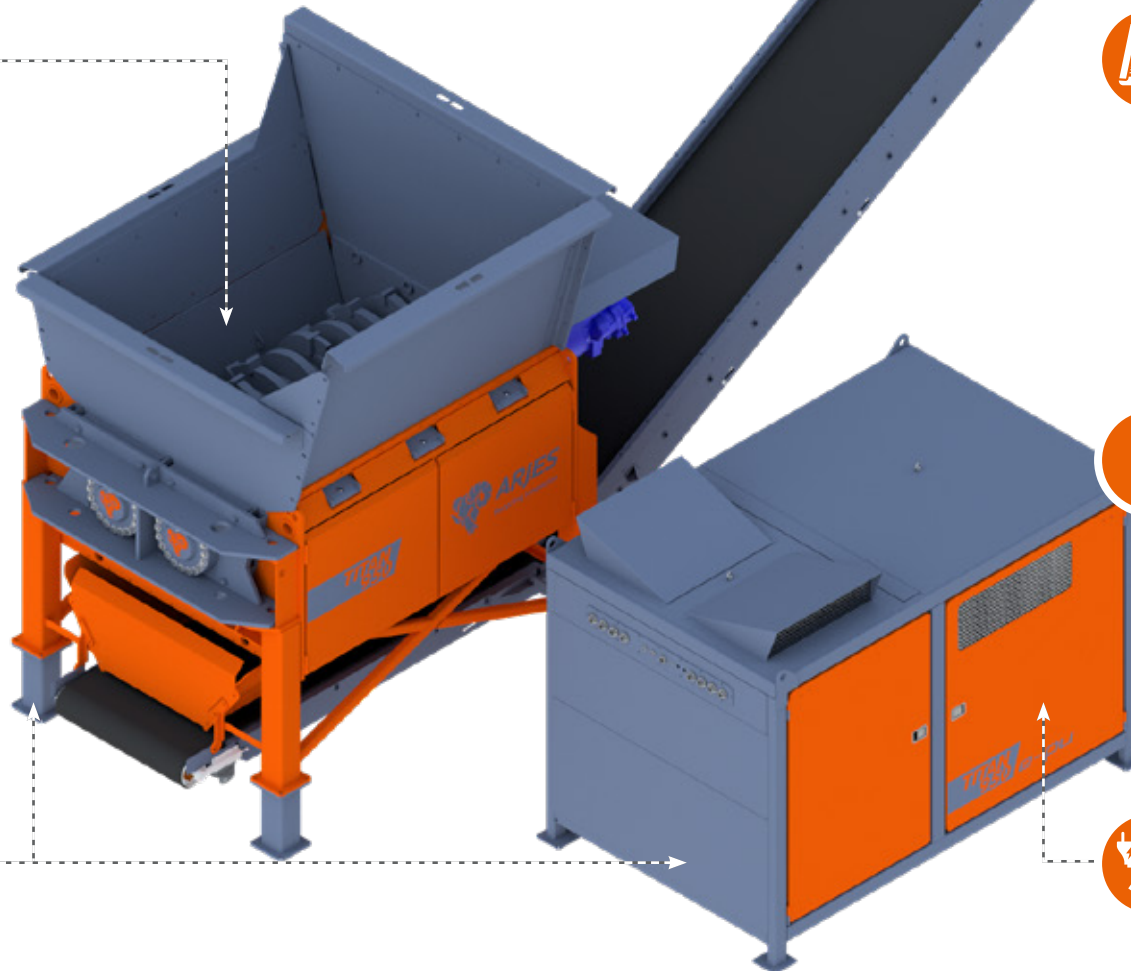
CONTROL SYSTEM

Operation via **remote control** and optional integration into complete systems possible according to customer requirements



DRIVE (e-pu / d-pu)

Two powerful **electric motors** or one **diesel engine** for off-grid operations



TECHNICAL DATA

DIMENSIONS

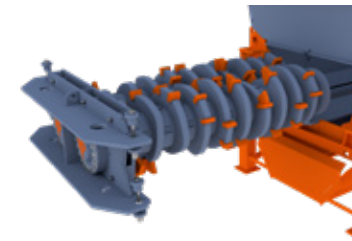
Version	Stationary	
Shredding Unit		
Length (mm)	4,500 / optional belt length	
Width (mm)	3,000	
Height (mm)	3,000 / 4,200 (incl. hopper extension)	
Control Unit		
Length (mm)	3,500	
Width (mm)	2,300	
Height (mm)	2,700	
Total weight (kg)	23,000 (shredding unit without belt) 7,000 (power unit)	

DRIVE

Engine	Electric	Diesel*
Power (kW)	2 x 250	405
Gearbox	Bonfiglioli	

SHREDDING UNIT

Hopper volume (m³)	5	
Shaft length (mm)	2,500	
Shaft diameter (mm)	860	
Weight (kg / cassette)	7,650	
Rotation speed (rpm)	15 – 45	45



Separate drive and control unit

The separate positioning of shredding and control components in a maximum distance of 6 meters reduces vibrations that act on the control system.

Quick change system for tool shafts

Easy installation and dismantling of the tool shafts within a very short time makes it easy to maintain, refurbish and change the shafts with an almost uninterrupted operation.

Hydraulically damped side combs

For particularly large and heavy metal parts, the suspension of the hydraulically side combs is located above the shafts, these are automatically folded out in the event of excessive resistance.

*Engine type and emission standard according to mobile version



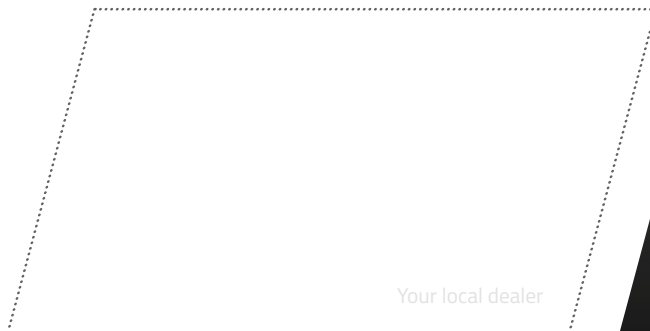
ARJES GmbH

Borntalstraße 9

D-36460 Krayenberggemeinde

✉ info@arjes.de

🌐 www.arjes.de



Your local dealer

Disclaimer: We reserve the right to make technical changes, misprints and errors. All specifications refer to the standard version without optional features. Status: June 2024



5 CONVINCING ARGUMENTS FOR OUR HEAVY-DUTY CLASS

- 1 Best price-performance ratio in its class**
Including standard attachments* (e.g. overbelt magnet)
- 2 Largest range of applications**
Processing of many types of material with the toughest requirements (such as car bodies, commercial waste, AG/EM tires, railway sleepers etc.)
- 3 Revolutionary shaft quick change system**
Shortens maintenance times, refurbishment and changing of the different shaft types for almost uninterrupted operation
- 4 Maximum mobility in every situation**
Standardized track system* and cost-effective transportation
- 5 Innovative SCU plug and play control**
Predefined shredding programs that control rotation and speed of shafts for user-friendly operability

*only available for mobile machines